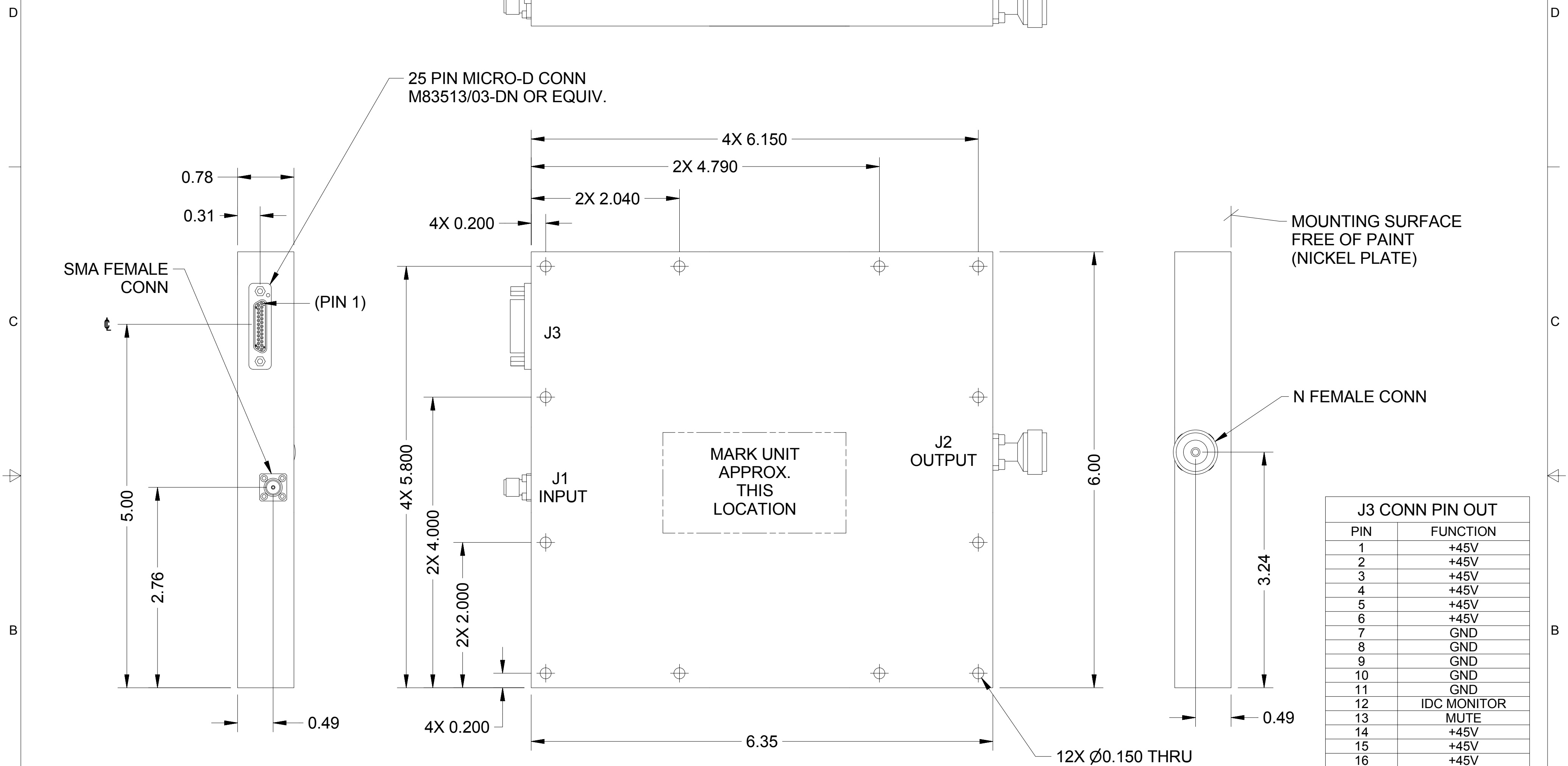


THIS DOCUMENT CONTAINS INFORMATION PROPRIETARY TO DELTA MICROWAVE. ANY REPRODUCTION OF THIS DOCUMENT WITHOUT WRITTEN PERMISSION IS EXPRESSLY PROHIBITED

ZONE	REV	DESCRIPTION	DATE	APPROVED
	A	INITIAL RELEASE	04/04/14	



J3 CONN PIN OUT	
PIN	FUNCTION
1	+45V
2	+45V
3	+45V
4	+45V
5	+45V
6	+45V
7	GND
8	GND
9	GND
10	GND
11	GND
12	IDC MONITOR
13	MUTE
14	+45V
15	+45V
16	+45V
17	+45V
18	+45V
19	GND
20	GND
21	GND
22	GND
23	GND
24	GND
25	TEMP MONITOR

2. MARKING: USING LABEL OR BLACK EPOXY INK TO INCLUDE:
DELTA MICROWAVE, MODEL NO., SERIAL NO.,
CODE IDENT. NO. 51719 AND DATE CODE
CONNECTOR REFERENCE DESIGNATIONS (AS SHOWN)

1: FINISH: HAZE GRAY EPOXY POLYAMIDE TOPCOAT
PER MIL-DTL-24441C, SUP.1
MIL-DTL-24441/21, TYP 3, FORMULA 151
USING GREEN EPOXY POLYAMIDE PRIMER
MIL-DTL-24441/20, TYP 3, FORMULA 150

NOTES:

UNLESS OTHERWISE SPECIFIED DIMENSIONS ARE IN INCHES TOLERANCES ARE:		CONTRACT NO. DM-HPLS-160-101		<p>Delta Microwave Inc. 300 Del Norte Boulevard Oxnard CA 93030</p>
FRACTIONS	DECIMALS	ANGLES	APPROVALS	
+	.xx ± .03	+ 1°	DATE	
-	.xxx ± .010	-	DRAWN D.MOORE 01/23/14	
MATERIAL	REVIS	CHECKED	APPROVED	TITLE
FINISH	INTERPRET DRAWING PER ASME Y14.100 and ASME Y14.24	SCALE	SIZE	CODE IDENT NO.
USED ON MODEL#	DO NOT SCALE DRAWING	1/1	C	51719
		SHEET	DWG NO	001-0070
		1	1	OF 1