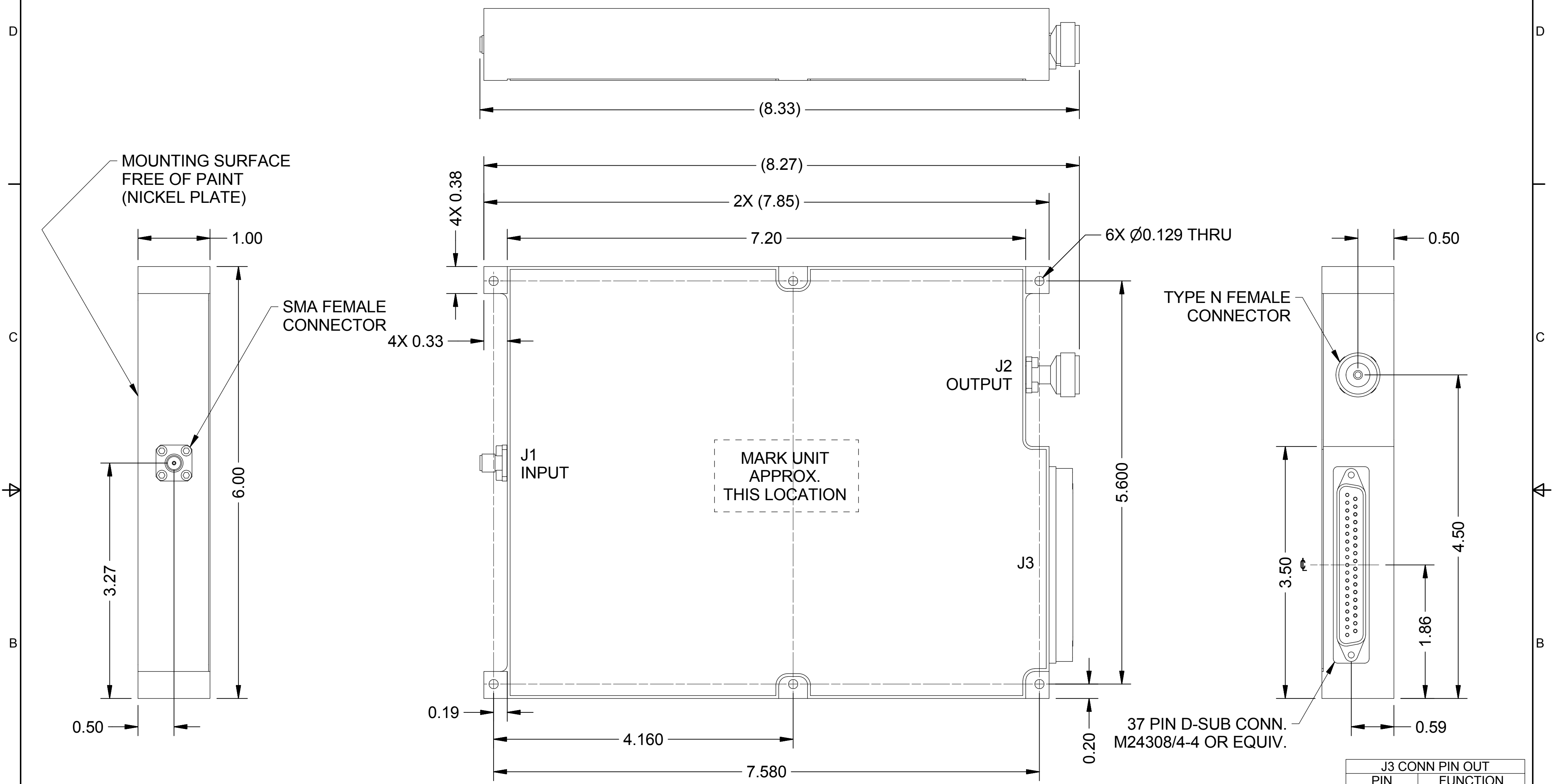


THIS DOCUMENT CONTAINS INFORMATION PROPRIETARY TO DELTA MICROWAVE. ANY REPRODUCTION OF THIS DOCUMENT WITHOUT WRITTEN PERMISSION IS EXPRESSLY PROHIBITED

REVISION HISTORY				
REV	DESCRIPTION	DATE	CHK	APPVD
A	INITIAL RELEASE	12/23/14		
B	PRODUCTION RELEASE	12/09/15		




J3 CONN PIN OUT	
PIN	FUNCTION
1-15	+28V
16	N/C
17	IDC_SENSE
18	IDC_FAULT
19	BLANKING
20-34	+28V_RTN
35	DIGITAL RTN
36	TEMP_SENSE
37	TEMP_FAULT

2. MARKING: USING LABEL OR BLACK EPOXY INK TO INCLUDE:
 DELTA MICROWAVE, MODEL NO., SERIAL NO.
 CODE IDENT. NO. 51719 AND DATE CODE
 CONNECTOR REFERENCE DESIGNATIONS (AS SHOWN)

1. FINISH: HAZE GRAY EPOXY POLYAMIDE TOPCOAT
 PER MIL-DTL-24441C,SUP.1
 MIL-DTL-24441/21, TYP 3, FORMULA 151
 USING GREEN EPOXY POLYAMIDE PRIMER
 MIL-DTL-24441/20, TYP 3, FORMULA 150

NOTES:

UNLESS OTHERWISE SPECIFIED DIMENSIONS ARE IN INCHES TOLERANCES ARE: FRACTIONS DECIMALS ANGLES + .005 ±.003 ± 1° - .010 ±.010		CONTRACT NO. DM-HPSC-150-101		 Delta Microwave Inc. 300 Del Norte Boulevard Oxnard CA 93030	
MATERIAL		APPROVALS	DATE		
FINISH		DRAWN C.DE HORTA	12/23/14	DM-HPSC-150-101 OUTLINE SIZE C CODE IDENT NO. 51719 DWG NO 001-0126	
USED ON MODEL#		CHECKED	APPROVED		
DO NOT SCALE DRAWING		REVISED C.DE HORTA 12/09/15	INTERPRET DRAWING PER ASME Y14.5-2009	SCALE 1:1	CAD FILE: ASSY2.iam

A

A