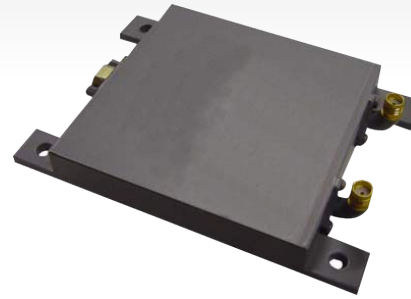


GPS Filter/Limiter - Space Qualified L5632

Specifications

PARAMETER	SPECIFICATIONS
Center Frequency	L1 1575.4 +/- 10 MHz L2 1227.6 +/- 10 MHz
Gain	36 ±3 dB
Noise Figure	3.0 dB (Center at + 25C) 3.5 (Center at +71C)
VSWR	1.5:1
80 dB Bandwidth	200 MHz Max
RF Power Handling	+10 dBm
Voltage	+9 to +25 VDC
Current	0.075 Amps
Finish	Haze Grey
RF Connectors	SMAF
DC Connector	D-Sub 9-pin
Operating Temperature	-54 to +71°C
Storage Temperature	-62 to +95 °C
Humidity	100% Condensing



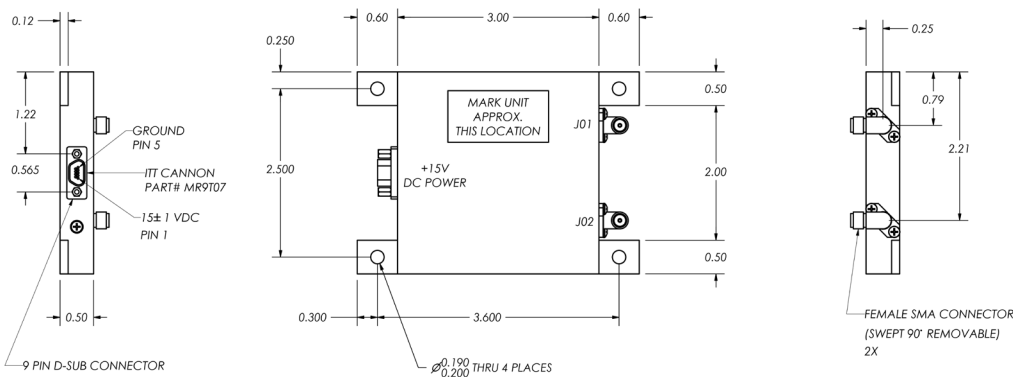
Features

- L1+L2 Operation
- Hi-Rel Qualified Design
- Low Noise Figure
- L-C Filter
- Discreet Amplifier

Applications

- Booster
- Missile
- Aircraft
- Maritime
- Mobile
- Test Equipment

Outline Drawing



Package size

0.5" x 3.0" x 3.0"