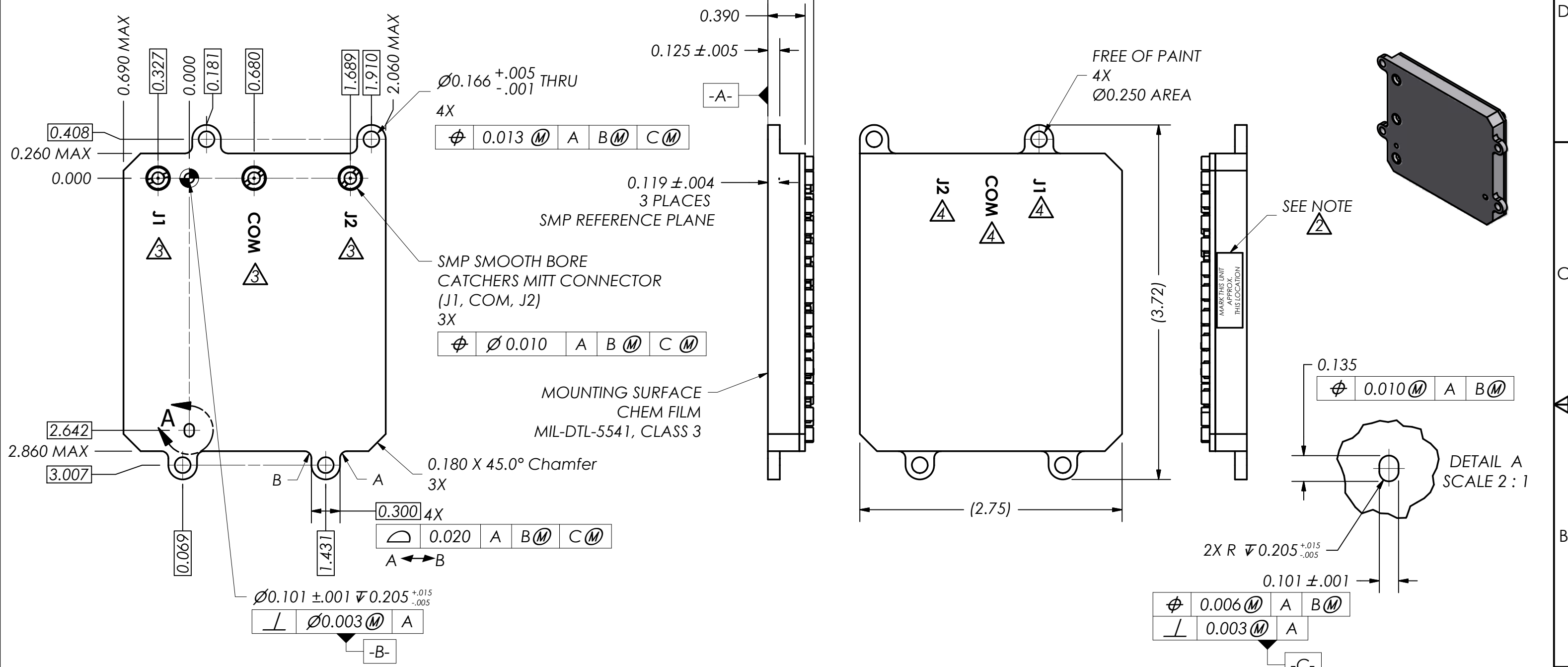


THIS DOCUMENT CONTAINS INFORMATION PROPRIETARY TO DELTA MICROWAVE. ANY REPRODUCTION WITHOUT WRITTEN PERMISSION IS EXPRESSLY PROHIBITED.

CUST. APPROVAL	ZONE	REV	DESCRIPTION	DATE	APPROVED
		A	INITIAL RELEASE	01/17/12	DRB
		B	ECO# 109149	01/26/12	



- 4. MARKING: USING WHITE WORK INK REFERENCE DESIGNATORS J1, COM, J2 AS SHOWN
- 3. MARKING: USING BLACK WORK INK REFERENCE DESIGNATORS J1, COM, J2 AS SHOWN
- 2. MARKING: USING LABEL OR WHITE WORNOW INK TO INCLUDE:  
DELTA MICROWAVE, MODEL NO., SERIAL NO., CODE IDENT. NO. 51719 AND DATE CODE

1. FINISH: PRIME AND PAINT PER MIL-STD-7179  
TOP COAT BLACK (PER FED-STD-595 COLOR 37038 OR 27038)  
POLYURETHANE PAINT PER MIL-PRF-85285, TYPE 1  
USING WASH PRIMER PER DOD-P-15328 COATED WITH  
EPOXY PRIMER PER MIL-P-53022

NOTES: USED ON MODEL# DO NOT SCALE DRAWING

UNLESS OTHERWISE SPECIFIED DIMENSIONS ARE IN INCHES TOLERANCES ARE:			CONTRACT NO. <b>Ku5934</b>		<b>Delta Microwave Inc.</b> 300 Del Norte Boulevard Oxnard CA. 93030
FRACTIONS	DECIMALS	ANGLES	APPROVALS	DATE	
-	.xx ± .03 .xxx ± .010	+ 1° - 1°	DRAWN J.GAVLIK	01/17/12	
			REVISD J.GAVLIK	01/26/12	
MATERIAL	FINISH	SEE NOTES	CHECKED	APPROVED	<b>OUTLINE</b>  SIZE: <b>B</b> CODE IDENT NO. <b>51719</b> DWG NO. <b>Ku5934</b>
			INTERPRET DRAWINGS PER ASME Y14.100 and ASME Y14.24		
SCALE 1:1		SHEET 1 OF 1			