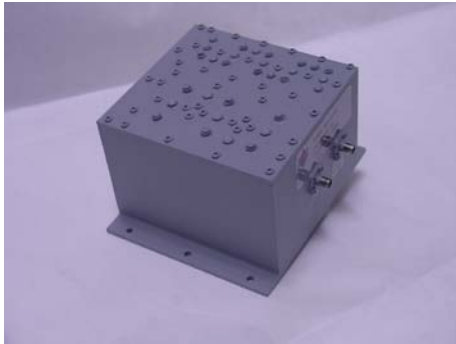




Model Number L59102

GPS Filter/Amplifier

Rev E
04/20/10



Features:

- L1+L2 Operation
- Low Noise Figure
- Cavity Filter
- Discreet Amplifier
- Excellent out-of-band attenuation
- Designed for high interference co site applications

Applications:

- Aircraft
- Maritime
- Mobile
- Test Equipment

Package size:

- 3.0 x 4.0 x 4.75"

(Please see outline for exact dimensions)

Specifications:

(As measured from input connector, to output connector)

Center Frequencies	(L1) 1575.42 MHz (L2) 1227.6 MHz
Gain	35 +/- 2 dB
Gain Flatness	< 0.5 dB p-p
Noise Figure	3.0 dB (ambient) 3.5 dB (over operating temperature)
3 dB Bandwidth	15 MHz Maximum
Rejection	3 dB @ 1570.42, and 1222.6 MHz
1 dB Compression Point	+ 10 dBm min
Maximum RF input (Survive operational)	+ 20 dBm
VSWR	1.5:1 (input and output)
Absolute group delay fluctuation over operating temperature @ L1, and L2	+/- 5nS maximum
DC Power (Via RF output connector)	+5 +/-0.25 VDC @ 150 mA max
Operating temperature	+71 to -34C
Connectors	SMA Female

Specifications: (Input filter)

Center Frequency	(L1) 1575.42 MHz (L2) 1227.6 MHz
3 dB Bandwidth	10 Mhz min, 20 MHz max
80 dB Bandwidth	150 MHz min
Rejection	
1246 MHz	> 30 dB
1262 MHz	> 50 dB
1621-1627 MHz	> 65 dB
1401 Mhz	> 80 dB

Specifications: (Output filter)

Center Frequency	(L1) 1575.42 MHz (L2) 1227.6 MHz
3 dB Bandwidth	10 +/- 0.5 Mhz
80 dB Bandwidth	50 MHz min
Rejection	
1246 MHz	> 65 dB
1262 MHz	> 90 dB
1621-1627 MHz	> 100 dB
1401 MHz	> 100 dB



Delta Microwave

300 Del Norte Blvd.
Oxnard, CA. 93030

Phone: 805.751.1100
Fax: 805.240.9544

email: sales@deltamicrowave.com
www.deltamicrowave.com



Author

Approved