



# Model Number L5996 7 Channel GPS Filter/Amplifier

Rev.-  
05/09/06

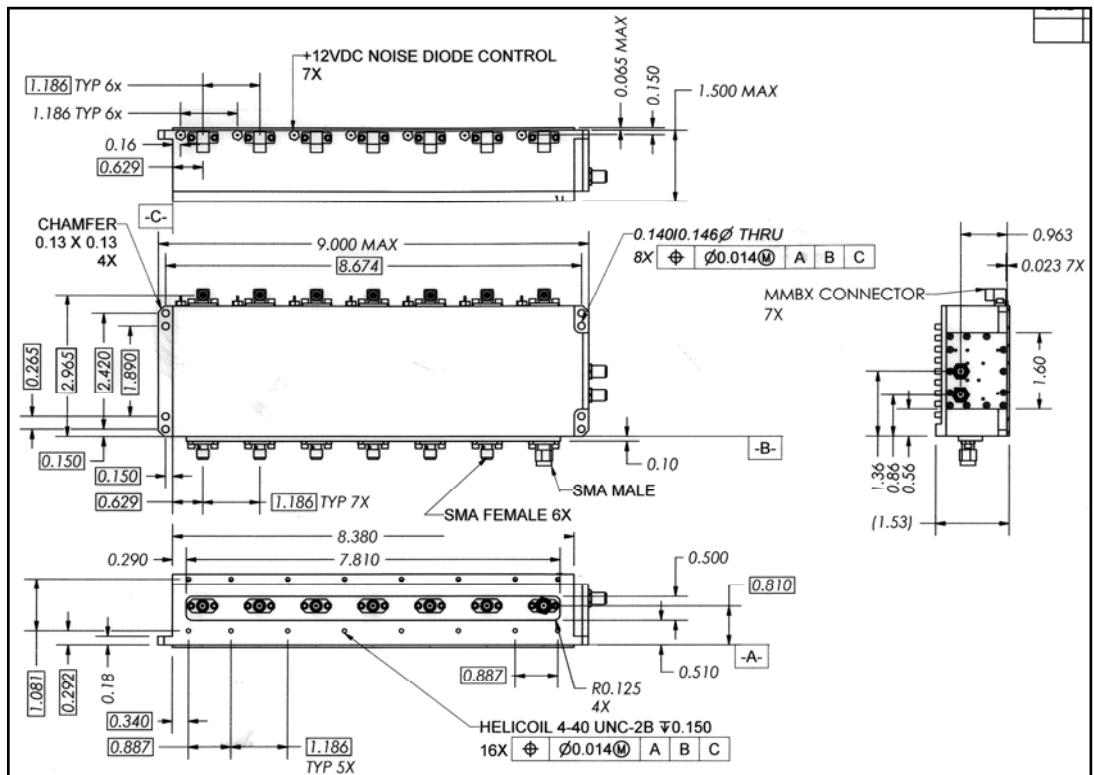
## Features:

- 7 discreet GPS L1 and L2 dual filters
- 14 separate L1 and L2 paths with independent limiter diodes, and low noise amplifiers that allow L1 and L2 to operate independently
- Precision amplitude, and phase matching between channels for nulling antenna receivers
- Bandpass filters are Cavity Design
- High RF power handling capability
- Low Noise Figure
- Extremely small footprint



## Applications:

- Maritime
- Airborne
- Missile





# Model Number L5996 7 Channel GPS Filter/Amplifier

Parameter	L1 Channel	L2 Channel
Center Frequency	1575.4 + 10 MHz	1227.6 + 10 MHz
1 dB Bandwidth	>± 15 MHz Minimum	
3 dB Bandwidth	± 25 MHz Minimum to ± 35 MHz Maximum	
30 dB Bandwidth	± 75 MHz Maximum	
50 dB Two-sided Bandwidth	± 150 MHz Maximum	
Center Frequency Gain	19 Minimum, 29 Maximum	
(-2 Version only) Aux Amplifier Gain	40 to 50 dB	
Ultimate Rejection	40 dBc minimum for all frequencies between 100 MHz and 18 GHz that are greater than + 150 MHz from L1 and L2. 50 dBc minimum from 1 GHz to 2 GHz.	
Signal Band Noise Figure	2.5 dB Maximum at + 10 MHz from L1 and L2 3.0 dB Maximum over Operating Temperature	
VSWR (In & Out)	1.6:1 Maximum referenced to 50 Ohms	
Ch.-Ch.? Amplitude F0 ±8	< 0.4 dB	
Ch.-Ch. ? Time Delay F0 ±8	< 7 ns	
DC Power	+5 ±0.5 VDC Via each RF Output Connector	
Current Draw	0.350 Amps Maximum	
Passband Ripple	± .33 dB Maximum	
In-Band Power Handling (frequencies Fo <+150 MHz)	1 Watt CW Maximum	
Out-Of Band Power Handling (frequencies Fo >+150 MHz)	200 Volts per Meter peak	
RF Output power	+12 dBm Maximum	
Delta Time Delay	10 ns peak-peak Maximum	
Limiter Recovery Time	< 50 µs	
Continuous Operating Temp	- 40° to + 80°C	
Non Operating Temperature	- 62° to + 80°C	
Temperature, Operate, Case, Ambient	- 40° to + 85°C	
Humidity	< 95%, non-condensing	
Shock	30g peak for 11ms	
Vibration	+ 20 Grms oper., 0.1g <sup>2</sup> /Hz, 30Hz to 500Hz for 1 hr.	
Altitude, operate	0 – 60,000 feet	
Connectors	(Input) 6 SMA Male and 1 SMA Female per MIL-C-39012 (Output) 7 SMA Female per MIL-C-39012 (Aux) 2 SMA Female per MIL-C-39012	
Finish	Haze Gray per MIL-P-24441, Type 1	
Weight	2.5 lbs Maximum	
Hermeticity (Input connector surface only)	Per MIL-STD-883 Method 112 Condition "D"	

## Delta Microwave

1301 Vanguard Dr. Phone: 805.240.1044 email: sales@deltamicrowave.com  
Oxnard, CA. 93033 Fax: 805.240.9544 www.deltamicrowave.com

--	--

Delta Microwave reserves the right to change specifications without notice. Please verify specification revision letter upon order placement.

By \_\_\_\_\_ Checked \_\_\_\_\_