



Model Number S6118

Space Qualified 90° Hybrid Coupler

Rev. E
06/13/12

Features:

- Stripline Design
- Space Qualified
- Low Loss
- Vented



Applications:

- Launch Vehicle
- Satellite
- BMD

Package size:

- 0.50 x 0.66 x 1.16"

(Please see outline for exact dimensions)

Specifications:

Passband	2000 to 2400 MHz
Insertion Loss	0.3 dB maximum*
Amplitude Balance	0.5 dB Peak-to-Peak
VSWR	1.25:1 maximum
Isolation	20 dB minimum
Phase Balance	90 ± 2°
Power Handling	20 watts CW through critical pressure to 1x10 ⁻⁸ Torr with >6 dB margin (100 watt design)
Weight	1.5 ounces
Connectors	SMA Female
Outgassing	< 0.1% CVCM and < 1% TML
Operating Temperature	-65 to +85° C
Screening	Per MIL-DTL-23971C Screened in lots of 50 Group A and Group B testing per "Space Flight Application" guidelines

* Measured per MIL-DTL-23971C Paragraph 4.7.5



Delta Microwave

300 Del Norte Blvd.
Oxnard, CA. 93030

Phone: 805.751.1100
Fax: 805.240.9544

email: sales@deltamicrowave.com
www.deltamicrowave.com

--	--

Written By Approved By

Delta Microwave reserves the right to change specifications without notice. Please verify specification revision letter upon order placement.

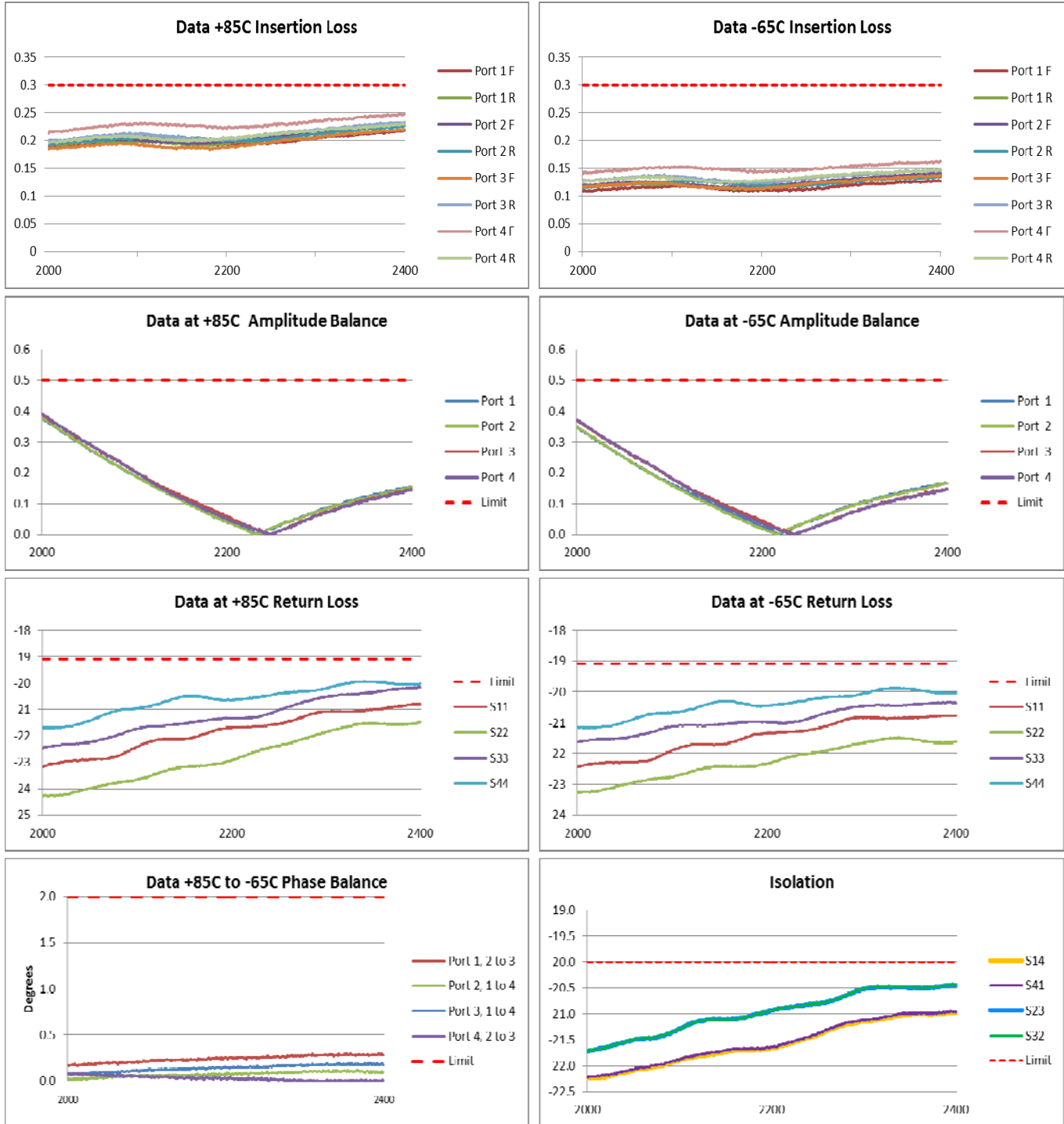


Model Number S6118

Space Qualified 90° Hybrid Coupler

Rev. E
06/13/12

Measured Data



S-Parameter Files Available



Delta Microwave

300 Del Norte Blvd.
Oxnard, CA. 93030

Phone: 805.751.1100
Fax: 805.240.9544

email: sales@deltamicrowave.com
www.deltamicrowave.com

--	--

Written By _____ Approved By _____

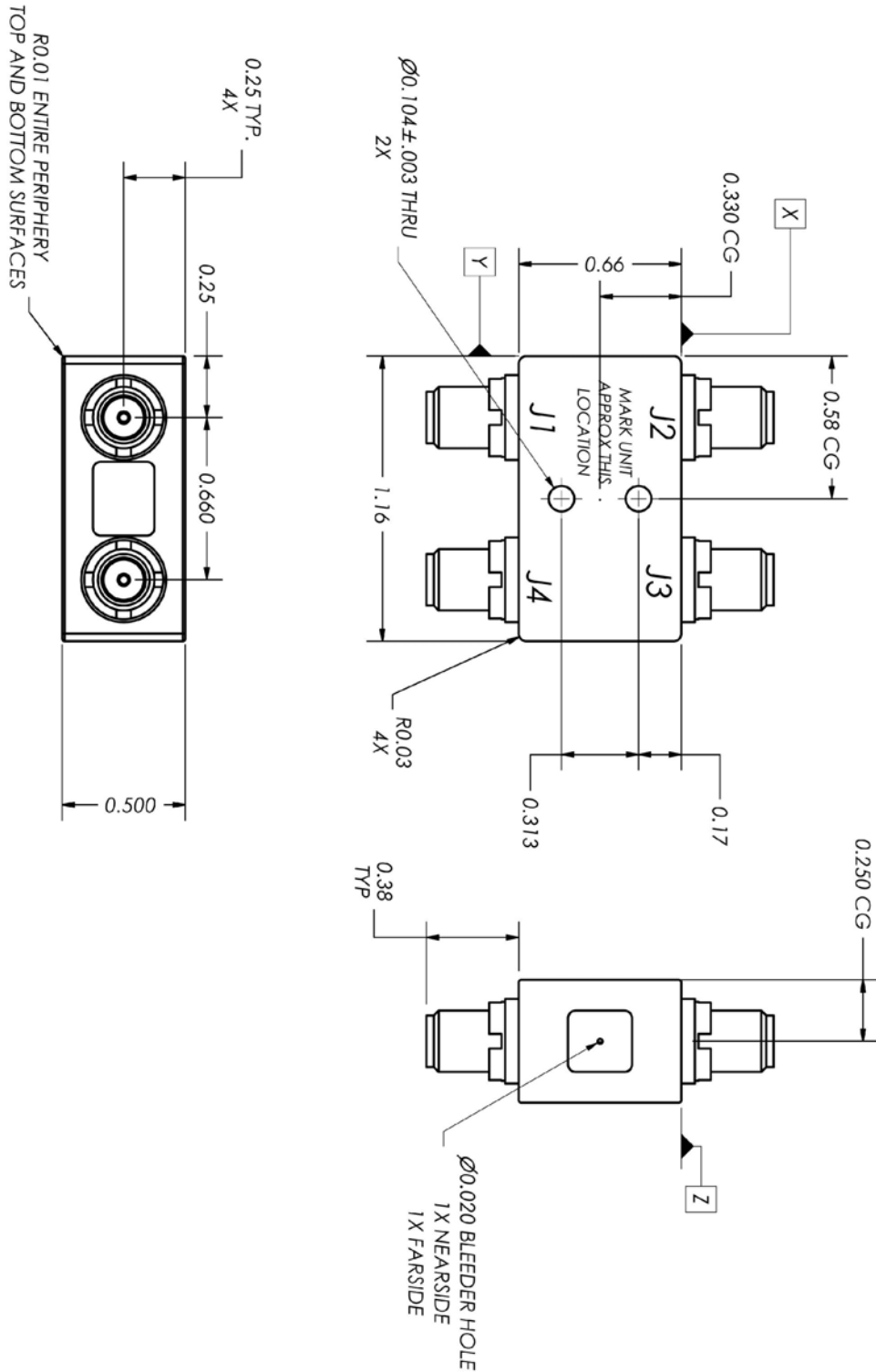
Delta Microwave reserves the right to change specifications without notice. Please verify specification revision letter upon order placement.



Model Number S6118

Space Qualified 90° Hybrid Coupler

Rev. E
06/13/12



Delta Microwave

300 Del Norte Blvd.
Oxnard, CA. 93030

Phone: 805.751.1100
Fax: 805.240.9544

email: sales@deltamicrowave.com
www.deltamicrowave.com

--	--

Written By Approved By

Delta Microwave reserves the right to change specifications without notice. Please verify specification revision letter upon order placement.