

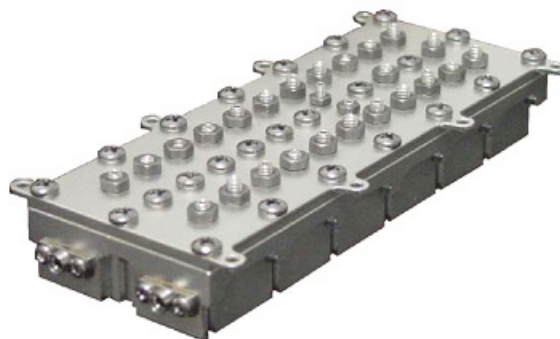
# Bandpass Filter S1964

## Specifications

| PARAMETER                                    | SPECIFICATIONS                                    |
|--|---|
| Center Frequency                             | See Chart   |
| Matched Bandwidth                            | $\pm 31.25$ MHz                                   |
| Insertion Loss                               | 6.0 dB Maximum at Fo                              |
| Insertion Loss Variation Over Temperature    | 0.5 dB Maximum at Fo                              |
| Flatness                                     | 0.2 dB p-p over 20.833 MHz (Residual Variation)   |
| Flatness                                     | 0.5 dB over 20.833 MHz (2nd Order Polynomial Fit) |
| Flatness                                     | 0.75 dB p-p over 62.5 MHz                         |
| Return Loss                                  | 20 dB   |
| Rejection                                    | 3 dB @ Fo $\pm 41.67$ MHz                         |
| Rejection                                    | 43 dB @ Fo $\pm 52.08$ MHz                        |
| Rejection                                    | 47 dB @ Fo $\pm 54.69$ MHz                        |
| Rejection                                    | 58 dB @ Fo $\pm 62.5$ MHz                         |
| Rejection                                    | 70 dB @ Fo $\pm 72.92$ MHz                        |
| Rejection                                    | 70 dB @ Fo $\pm 2000$ MHz                         |
| Phase Deviation Over Any 20.833 MHz Sub-Band | 10° Maximum                                       |
| Connectors                                   | MSSS Male   |
| Operating Temperature                        | +5°C to +75°C                                     |
| Survival Temperature                         | -50°C to +100°C                                   |
| Storage Temperature                          | -25°C to +80°C                                    |

## Center Frequency

| MODEL NUMBER | CENTER FREQUENCY |
|--------------|------------------|
| S1964-1      | 2531.25 MHz      |
| S1964-2      | 2593.75 MHz      |
| S1964-3      | 2656.72 MHz      |
| S1964-4      | 2718.75 MHz      |
| S1964-5      | 2781.25 MHz      |
| S1964-6      | 2843.75 MHz      |
| S1964-7      | 2906.25 MHz      |
| S1964-8      | 2968.75 MHz      |



## Features

- Cavity design
- Patented cross coupling design
- Excellent phase and group delay
- Excellent rejection

## Applications

- Satellite up/down converter
- Test equipment

## Package size

0.51" x 1.3" x 3.35"

# Outline Drawing

