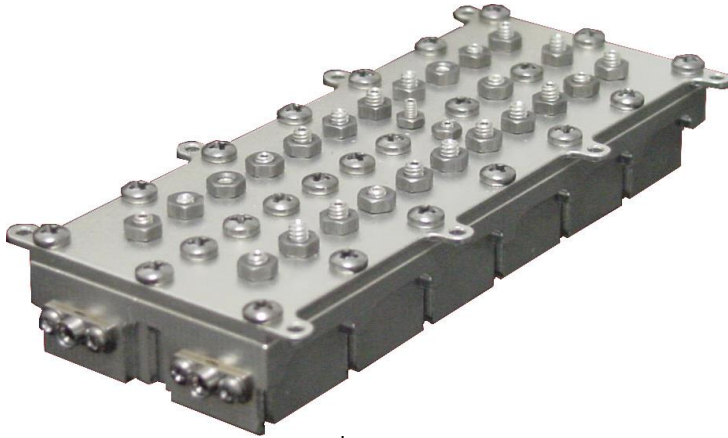




Model Number S1964

Space qualified Bandpass Filter

Rev.a
1/25/05



Model #	Center Frequency
S1964-1	2531.25 MHz
S1964-2	2593.75 MHz
S1964-3	2656.72 MHz
S1964-4	2718.75 MHz
S1964-5	2781.25 MHz
S1964-6	2843.75 MHz
S1964-7	2906.25 MHz
S1964-8	2968.75 MHz

Features:

- Cavity Design
- Patented Cross Coupling Design
- Excellent Phase and Group Delay
- Excellent Rejection

Applications:

- Satellite Up/Down Converter
- Test Equipment

Package size:

- 0.51 x 1.3 x 3.35"

(Please see outline for exact dimensions)

PARAMETERS	SPECIFICATIONS
Center Frequency	See Chart
Matched Bandwidth	± 31.25 MHz
Insertion Loss	6.0 dB Maximum at Fo
Insertion Loss Variation Over Temperature	0.5 dB Maximum at Fo
Flatness	0.2 dB p-p over 20.833 MHz (Residual Variation)
Flatness	0.5 dB over 20.833 MHz (2 nd Order Polynomial Fit)
Flatness	0.75 dB p-p over 62.5 MHz
Return Loss	20 dB
Rejection	3 dB @ Fo ± 41.67 MHz
Rejection	43 dB @ Fo ± 52.08 MHz
Rejection	47 dB @ Fo ± 54.69 MHz
Rejection	58 dB @ Fo ± 62.5 MHz
Rejection	70 dB @ Fo ± 72.92 MHz
Rejection	70 dB @ Fo ± 2000 MHz
Phase Deviation Over Any 20.833 MHz Sub-Band	10° Maximum
Connectors	MSSS Male
Operating Temperature	+5° to +75° C
Survival Temperature	-50° to +100° C
Storage Temperature	-25° to +80° C



Delta Microwave

1301 Vanguard Dr.
Oxnard, CA. 93033

Phone: 805.240.1044
Fax: 805.240.9544

email: sales@deltamicrowave.com
www.deltamicrowave.com

--	--

By _____ Checked _____

Delta Microwave reserves the right to change specifications without notice. Please verify specification revision letter upon order placement.