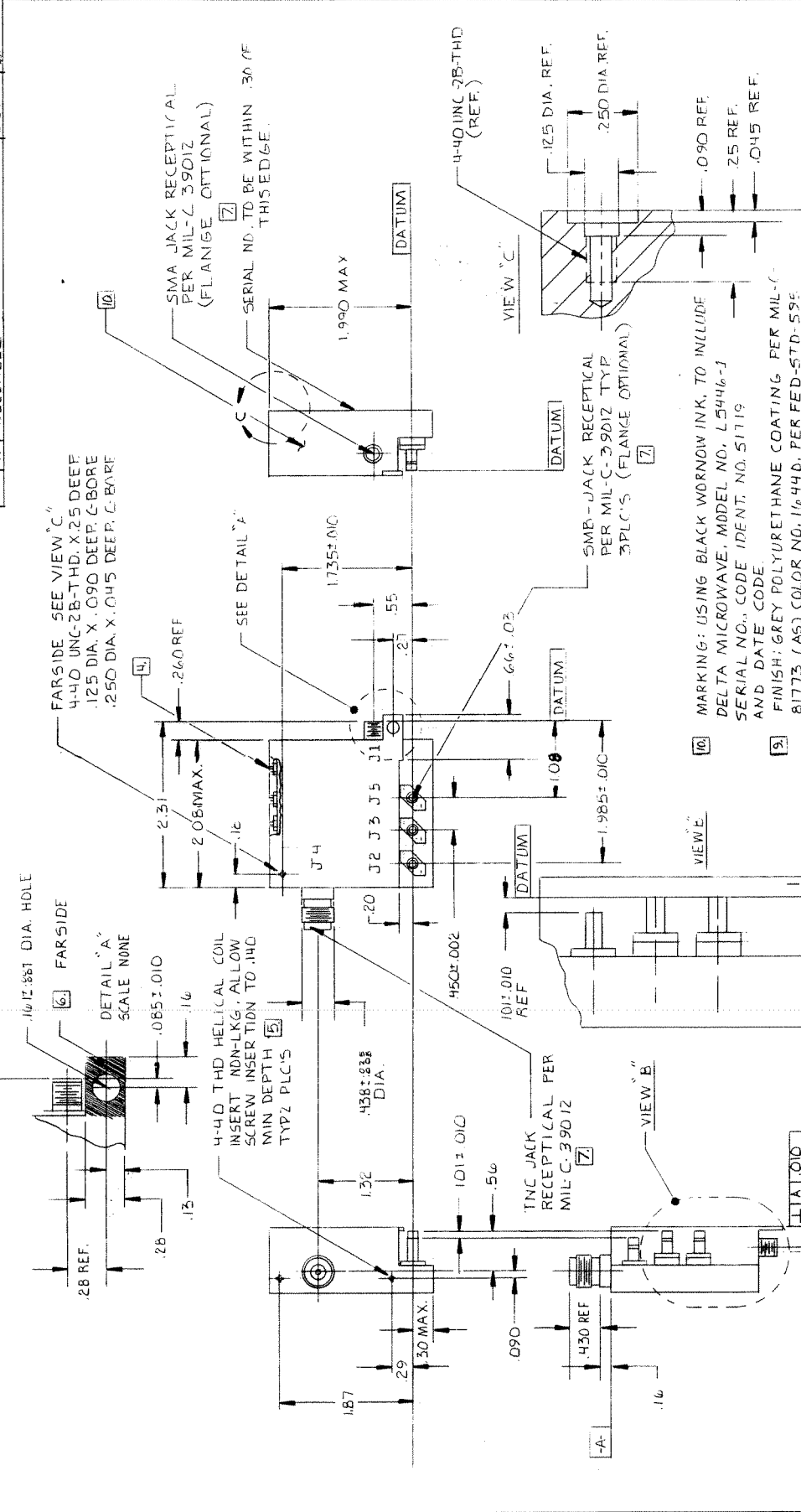


THIS DOCUMENT CONTAINS INFORMATION PROPRIETARY TO DELTA MICROWAVE. ANY REPRODUCTION OF THIS DOCUMENT WITHOUT WRIT-
TEN PERMISSION IS EXPRESSLY PROHIBITED.

| ZONE | LTR | DESCRIPTION | DATE | APPROVED |
|------|-----|-------------|---------|----------|
| A | | RELEASED | 2-28-86 | |



| | | | |
|---|--|---|--|
| DELTA MICROWAVE <small>840 VIA ALONDRA CAMARILLO, CALIFORNIA 93010</small> | | OUTLINE DIPLEXER | |
| UNLESS OTHERWISE SPECIFIED DIMENSIONS ARE IN INCHES FRACTIONS DECIMALS ANGLES XX ± .05 ± NA .XX ± .010 | | CONTRACT NO. APPROVALS DRAWN D.L. JONES (2-26-86) CHECKED [Signature] (2-28-86) | |
| QTY RECD IDENT | | PART OR IDENTIFYING NO. NOMENCLATURE OR DESCRIPTION PARTS LIST | |
| FINISH UNCOATED SURFACE OF METAL TAE. | | SIZE CODE IDENT NO. DRAWING NO. | |
| DO NOT SCALE DRAWING | | SCALE FULL 1 | |
| 1 INTERPRET DRAWING IN ACCORDANCE WITH MIL-STD-100 | | 2 ALL CONNECTORS TO BE PASSIVATED STAINLESS STEEL | |
| 2 UNIT WEIGHT : 5.02 MAX | | 3 ADJUSTING SCREWS MUST BE CUT FLUSH OR BELOW SURFACE. | |
| 3 MAY EXTEND BEYOND SURFACE AFTER TUNING | | 4 LOCATED WHERE SHOWN. LOCKNUTS MUST BE RECESSED BELOW SURFACE. | |
| 4 FIVE TUNING SCREWS WITH LOCKNUTS SHALL BE TAPPED HOLES. ARE BLIND HOLES OR SEAL WITH EPICAST 290 (WITH HARDENER 9810) OR EQUIV. | | 5 AREA INDICATED TO BE FREE OF A SEAL COATING TO BE FREE OF SEAL COATING. | |
| 6 THREAD AND CONDUCTOR AREA OF CONNECTORS | | 7 SEALING COAT INCLUDED IN DIMENSIONS | |
| NOTES | | NOTES CONT. | |
| FINISH: GREY POLYURETHANE COATING PER MIL-C-81773 (AS) COLOR NO. 1644D, PER FED-STD-595 USING EPOXY PRIMER MIL-P-25517C | | MARKING: USING BLACK WORNOW INK, TO INCLUDE DELTA MICROWAVE, MODEL NO. L5446-1 SERIAL NO., CODE IDENT. NO. 51719 AND DATE CODE. | |
| SMA JACK RECEPTICAL PER MIL-C-39012 TYP 3 PLCS (FLANGE OPTIONAL) | | SMA JACK RECEPTICAL PER MIL-C-39012 (REF.) | |
| TNC JACK RECEPTICAL PER MIL-C-39012 | | SMA JACK RECEPTICAL PER MIL-C-39012 (FLANGE OPTIONAL) | |
| 4-40 THD HELICAL COIL INSERT NDN-LKG. ALLOW MIN DEPTH TYPZ PLCS | | 4-40 UNC-2B-THD (REF.) | |
| FARSIDE SEE VIEW "C" | | FARSIDE SEE VIEW "C" | |
| 4-40 UNC-2B-THD X .25 DEEP .125 DIA. X .090 DEEP C-BORE .250 DIA. X .045 DEEP C-BARE | | 4-40 UNC-2B-THD (REF.) | |

GROUP 1 AND 2 MICROCOPIERS