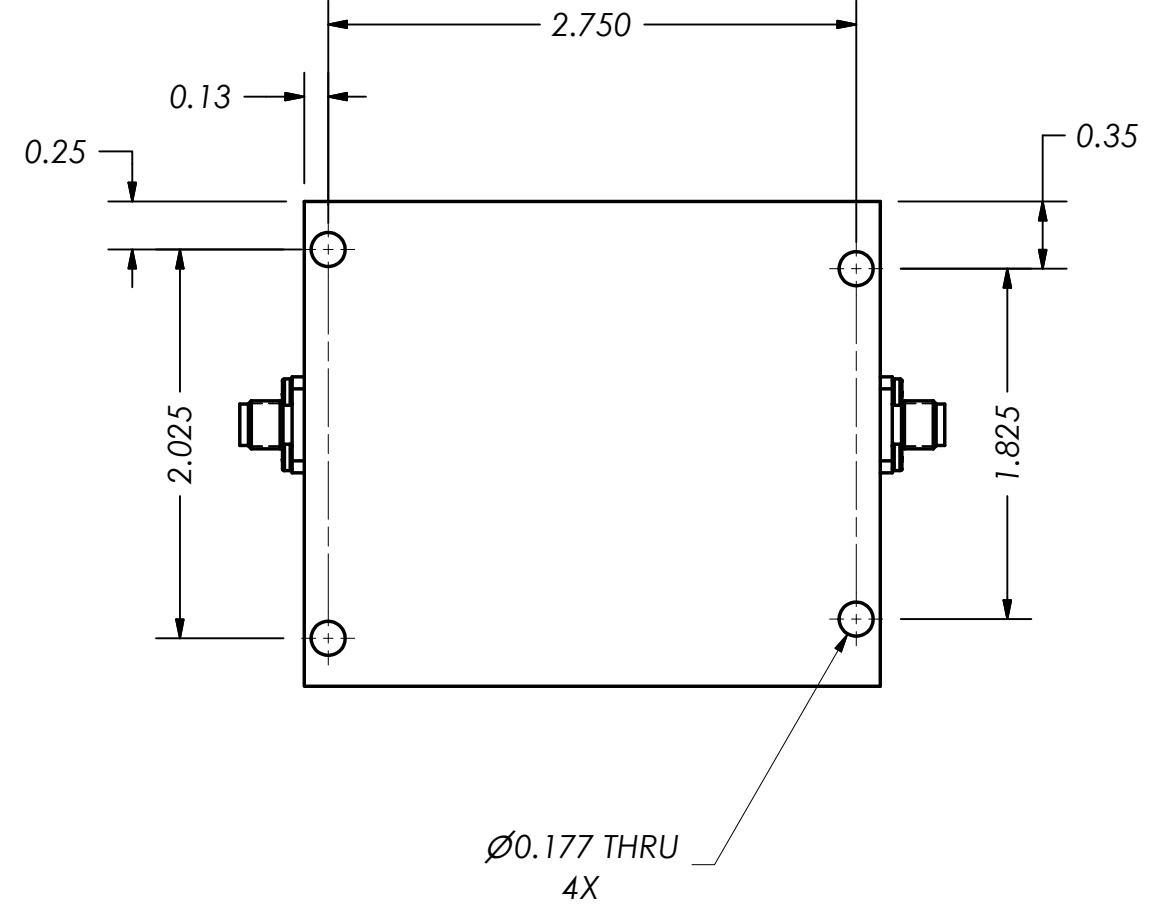
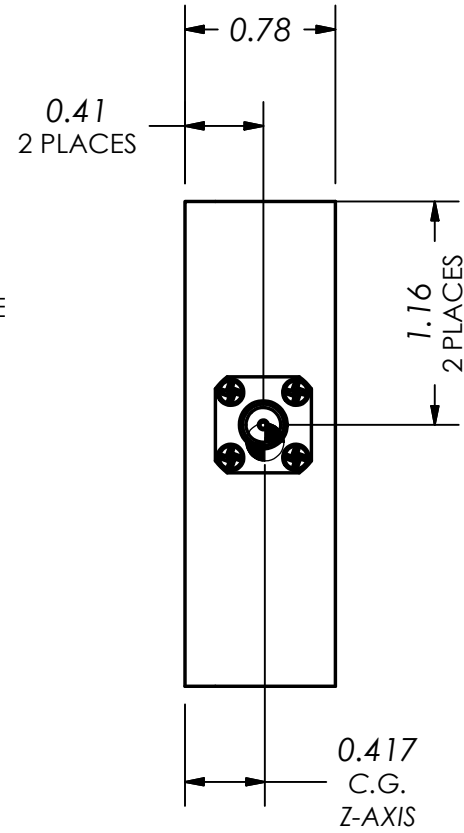
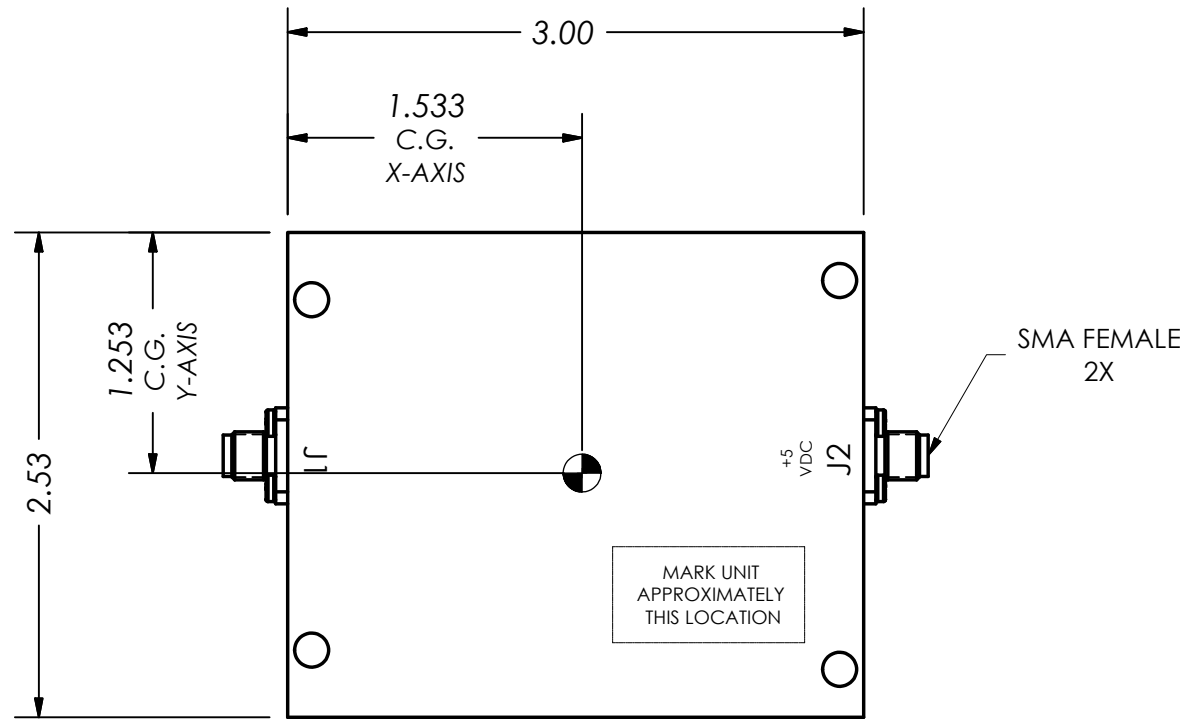


THIS DOCUMENT CONTAINS INFORMATION PROPRIETARY TO DELTA MICROWAVE. ANY REPRODUCTION WITHOUT WRITTEN PERMISSION IS EXPRESSLY PROHIBITED.

CUST. APPROVAL	ZONE	REV	DESCRIPTION	DATE	APPROVED
		A	INITIAL RELEASE	01/22/13	



PRINCIPAL MOMENTS
 I1 = 0.283 lbmass in
 I2 = 0.411 lbmass in
 I3 = 0.641 lbmass in

ROTATION TO PRINCIPAL
 Rx = -0.32°
 Ry = -0.03°
 Rz = -0.23°

2. MARKING: USING BLACK EPOXY INK TO INCLUDE:
 DELTA MICROWAVE, MODEL NO., SERIAL NO.,
 CODE IDENT. NO. 51719 AND DATE CODE

1: FINISH: NICKEL PLATE

NOTES:

UNLESS OTHERWISE SPECIFIED DIMENSIONS ARE IN INCHES TOLERANCES ARE: FRACTIONS DECIMALS ANGLES + .xx ± .03 + 1° - .xxx ± .010 -	CONTRACT NO. L56112		Delta Microwave Inc. 300 Del Norte Boulevard Oxnard CA. 93030		
	APPROVALS	DATE			
	MATERIAL	DRAWN R.SARRUCA	01/21/13	TITLE	
	FINISH	REVISED	CHECKED	APPROVED	
USED ON MODEL#	DO NOT SCALE DRAWING	INTERPRET DRAWINGS PER ASME Y14.100 and ASME Y14.24	SIZE B	CODE IDENT NO. 51719	DWG NO. 001-0023
			SCALE 1:1	SHEET 1 OF 1	