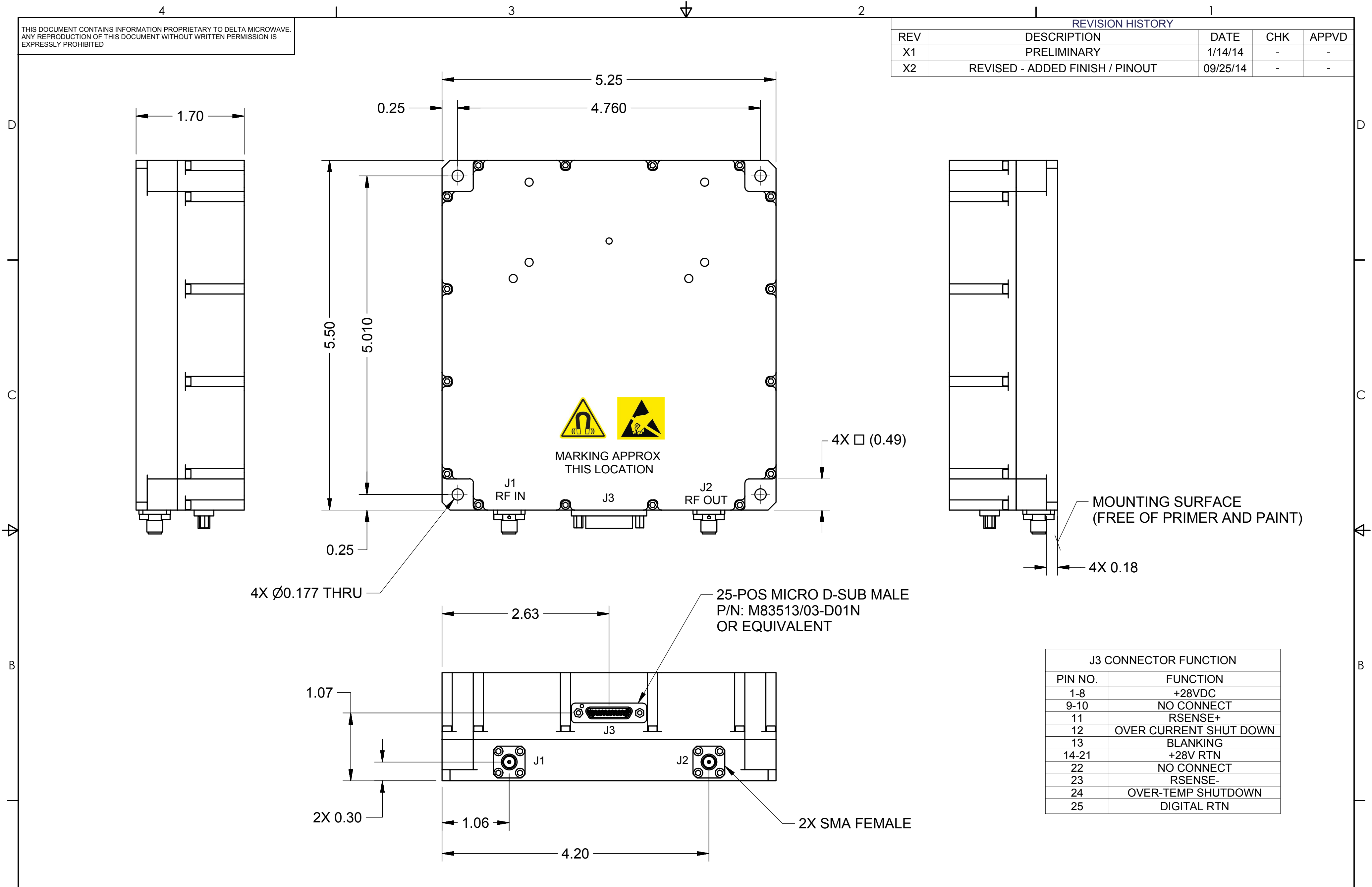


THIS DOCUMENT CONTAINS INFORMATION PROPRIETARY TO DELTA MICROWAVE. ANY REPRODUCTION OF THIS DOCUMENT WITHOUT WRITTEN PERMISSION IS EXPRESSLY PROHIBITED

REVISION HISTORY				
REV	DESCRIPTION	DATE	CHK	APPVD
X1	PRELIMINARY	1/14/14	-	-
X2	REVISED - ADDED FINISH / PINOUT	09/25/14	-	-




J3 CONNECTOR FUNCTION	
PIN NO.	FUNCTION
1-8	+28VDC
9-10	NO CONNECT
11	RSENSE+
12	OVER CURRENT SHUT DOWN
13	BLANKING
14-21	+28V RTN
22	NO CONNECT
23	RSENSE-
24	OVER-TEMP SHUTDOWN
25	DIGITAL RTN

2. MARKING: USING WHITE ENTHONE 50-100R WITH CATALYST 9 TO INCLUDE:
 DELTA MICROWAVE: MODEL NO., SERIAL NO., CODE IDENT NO. 51719,
 DATE CODE, ESD SYMBOL, MAGNETIC SYMBOL

1. FINISH: EXTERNAL SURFACES, EXCLUDING RF CONNECTORS, DC CONNECTORS
 AND MOUNTING SURFACE SHALL BE PAINTED WITH AEROGLAZE Z307 BLACK
 CONDUCTIVE POLYURETHANE TOPCOAT USING AEROGLAZE 9924 WASH PRIMER

NOTES:

UNLESS OTHERWISE SPECIFIED DIMENSIONS ARE IN INCHES TOLERANCES ARE: FRACTIONS DECIMALS ANGLES + .xx ±.03 +.1° - .xxx ±.010	CONTRACT NO. DM-HPS-50-102-S	 Delta Microwave Inc. 300 Del Norte Boulevard Oxnard CA 93030
	APPROVALS	
MATERIAL	DRAWN D.MOORE	TITLE OUTLINE, DM-HPS-50-102-S
FINISH	CHECKED	SIZE C
SURFACE AREA: 340.049 in ²	APPROVED	CODE IDENT NO. 51719
VOLUME: 25.493 in ³ MASS: 2.679 lbmass	REVISED	DWG NO. 001-0073
USED ON MODEL#	DO NOT SCALE DRAWING	SCALE 2:1
	INTERPRET DRAWING PER ASME Y14.5-2009	CAD FILE: SSPA_LAYOUT.iam
		SHEET 1 OF 1