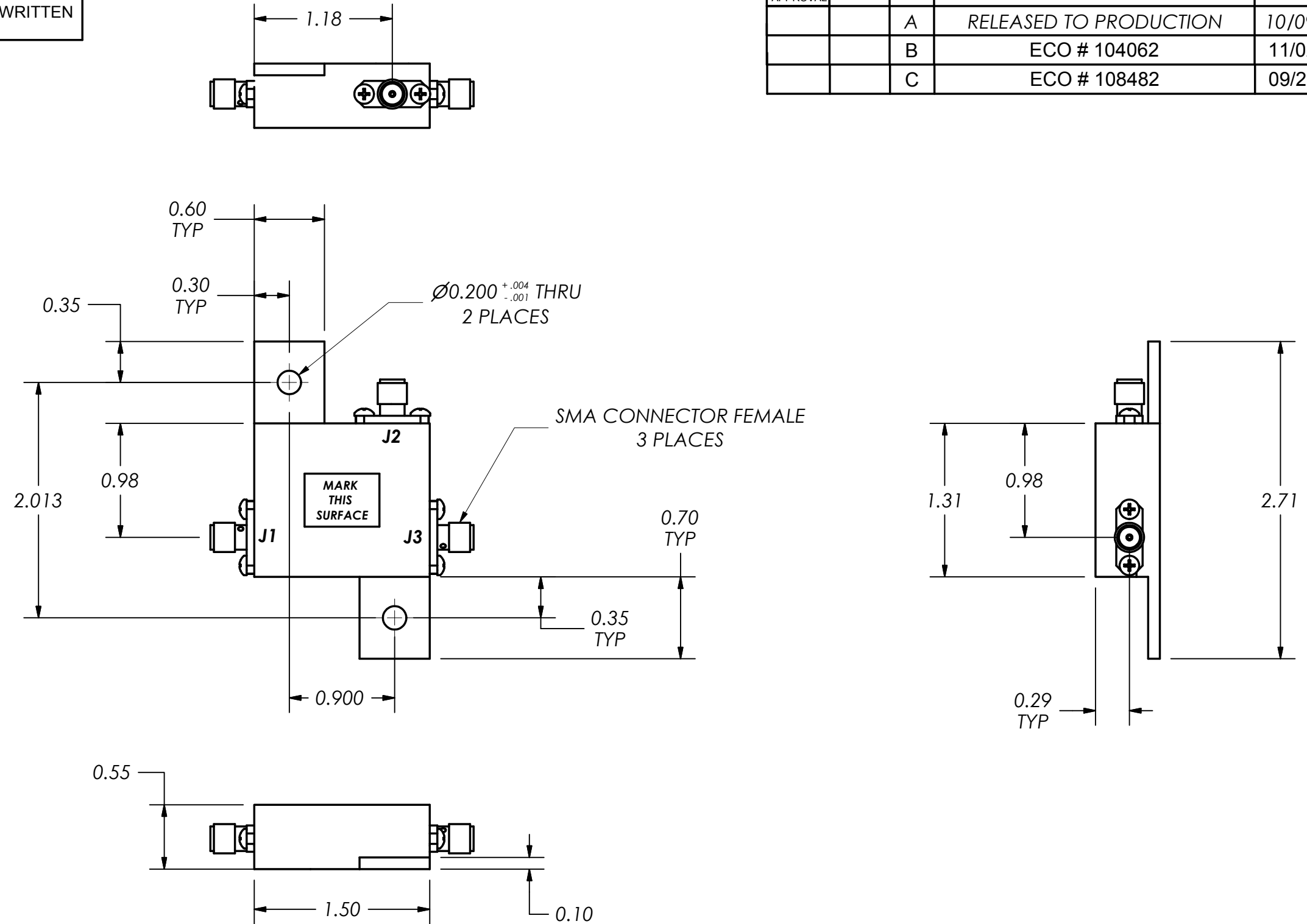


THIS DOCUMENT CONTAINS INFORMATION PROPRIETARY TO DELTA MICROWAVE. ANY REPRODUCTION WITHOUT WRITTEN PERMISSION IS EXPRESSLY PROHIBITED.



| CUST. APPROVAL | ZONE | REV | DESCRIPTION            | DATE     | APPROVED |
|----------------|------|-----|------------------------|----------|----------|
|                |      | A   | RELEASED TO PRODUCTION | 10/09/95 | R.E.S.   |
|                |      | B   | ECO # 104062           | 11/02/95 | R.E.S.   |
|                |      | C   | ECO # 108482           | 09/28/10 |          |



2. MARKING: USING LABEL OR BLACK WORNOW INK TO INCLUDE:  
DELTA MICROWAVE, MODEL NO., SERIAL NO.,  
CODE IDENT. NO. 51719 AND DATE CODE

1: FINISH: SILVER PLATE PER SCD10030

NOTES:

|  |  |  |  |  |  |
|--|--|--|--|--|--|
| UNLESS OTHERWISE SPECIFIED<br>DIMENSIONS ARE IN INCHES<br>TOLERANCES ARE:<br>FRACTIONS    DECIMALS    ANGLES<br>+                .xx ± .03                +<br>-                .xxx ± .010              - |  | CONTRACT NO. X5505                                     |  |  <b>Delta Microwave Inc.</b><br>300 Del Norte Boulevard Oxnard CA. 93030<br>TITLE |  |
| APPROVALS  |  | DATE   |  |  |  |
| DRAWN<br>D.F.ESTABROOK   |  | 10/09/95   |  | <b>OUTLINE</b><br>SIZE    CODE IDENT NO.    DWG NO<br><b>B</b> <b>51719</b> <b>X5505</b>   |  |
| REVISD<br>R.SARRUCA  |  | 09/28/10   |  |  |  |
| CHECKED  |  |  |  |  |  |
| APPROVED   |  |  |  | SCALE 1:1    SHEET 1 OF 1  |  |
| FINISH<br>SEE NOTE<br>  |  | INTERPRET DRAWINGS PER<br>ASME Y14.100 and ASME Y14.24 |  |  |  |
| USED ON MODEL#   |  | DO NOT SCALE DRAWING                                   |  |  |  |